

# Yields in Your Favor

# Xitavo™

Soybean Seed

Distributed by BASF Corporation

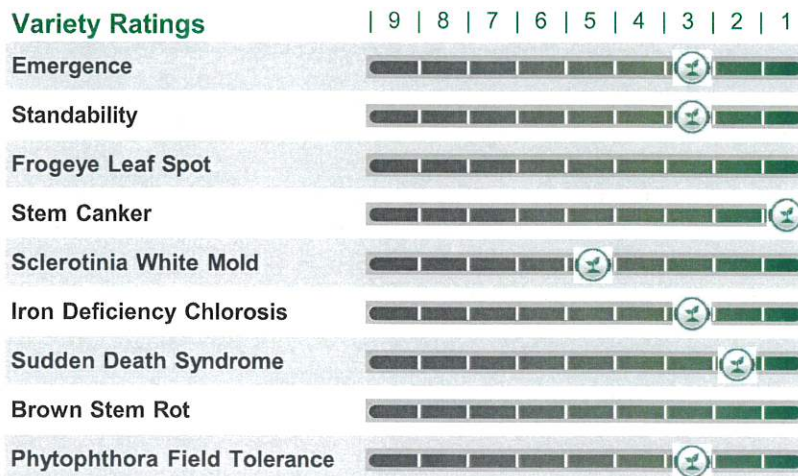


## XO 1212E

### Plant Characteristics

Relative Maturity	1.2
Flower Color	Purple
Pubescence	Gray
Pod Color	Tan
Hilum Color	Imp Black
Seed Size (seeds per lb.)	2600
Plant Height	Med/Tall
Canopy Type	
Soybean Cyst Nematode	PI88788
Phytophthora Source	1c
Sulfonylurea Tolerance	No

### Variety Ratings



#### Rating Scale

1: Excellent, 9: Poor | NG: No Gene Detected | -: Testing is currently underway.

### Placement Guide

Field Characteristics	E	VG	A	NR
Highly Productive	<input type="checkbox"/>	<input checked="" type="checkbox"/>	<input type="checkbox"/>	<input type="checkbox"/>
Low Productivity	<input checked="" type="checkbox"/>	<input type="checkbox"/>	<input type="checkbox"/>	<input type="checkbox"/>
Poorly Drained	<input type="checkbox"/>	<input checked="" type="checkbox"/>	<input type="checkbox"/>	<input type="checkbox"/>
Drought Prone	<input checked="" type="checkbox"/>	<input type="checkbox"/>	<input type="checkbox"/>	<input type="checkbox"/>
Irrigation	<input type="checkbox"/>	<input checked="" type="checkbox"/>	<input type="checkbox"/>	<input type="checkbox"/>
Variable Soils	<input checked="" type="checkbox"/>	<input type="checkbox"/>	<input type="checkbox"/>	<input type="checkbox"/>
No-Till, Cover Crop	<input checked="" type="checkbox"/>	<input type="checkbox"/>	<input type="checkbox"/>	<input type="checkbox"/>

E: Excellent | VG: Very Good | A: Average | NR: Not Recommended

### Local Agronomic Notes

Taller, rugged plant type for tougher acres, but is consistent across environments.

- 1C PRR gene with good IDC and excluder for high salts
- Standability is a plus with upright plant type
- Great defensive variety for medium to low productivity acres
- Great fit on variable soils, drought prone and no-till acres

Ratings subject to change. Localized positioning for Western Minnesota & South Dakota

**Product Use Statement:** Enlist E3<sup>®</sup> soybeans contain the Enlist E3 trait that provides crop safety for use of labeled over-the-top applications of glyphosate, glufosinate, and 2,4-D herbicides featuring Colex-D<sup>®</sup> technology when applied according to label directions. Following burndown, the only 2,4-D containing herbicide products that may be used with Enlist<sup>™</sup> crops are products that feature Colex-D technology and are expressly labeled for use on Enlist crops. 2,4-D products that do not contain Colex-D technology are not authorized for use in conjunction with Enlist E3 soybeans.

**Warning:** Enlist E3 soybeans are tolerant of over-the top applications of glyphosate, glufosinate, and 2,4-D. Accidental application of incompatible herbicides to this variety could result in total crop loss. When using 2,4-D herbicides, grower agrees to only use 2,4-D products that contain Colex-D technology authorized for use in conjunction with Enlist E3 soybeans. Always read and follow herbicide label directions prior to use.

YOU MUST SIGN A TECHNOLOGY AGREEMENT, READ THE PRODUCT USE GUIDE PRIOR TO PLANTING AND FOLLOW HERBICIDE RESISTANCE MANAGEMENT (HRM) REQUIREMENTS. The transgenic event in the Enlist E3<sup>®</sup> soybean is protected under Corteva Agriscience and M.S. Technologies, L.L.C. Patent Rights which can be found at: [www.corteva.us/Resources/trait-stewardship.html](http://www.corteva.us/Resources/trait-stewardship.html).

The transgenic event in the Enlist E3<sup>®</sup> soybean event in Enlist E3<sup>®</sup> soybeans is jointly developed and owned by Corteva Agriscience and M.S. Technologies, L.L.C. Enlist, Enlist E3 and the Enlist E3 logo are trademarks of Corteva Agriscience and their affiliated companies.

XTAVO IS A TRADEMARK OF M.S. TECHNOLOGIES, L.L.C., WEST POINT, IA. Please read the MS Technologies, L.L.C. use restriction agreement located at: <http://www.mstechseed.com/use-restriction-agreement/>

© 2022 BASF Corporation. T.W. Alexander Drive, RTP, North Carolina 27709  
All rights reserved.

# Yields in Your Favor

**Xitavo**<sup>TM</sup>  
Soybean Seed

Distributed by BASF Corporation

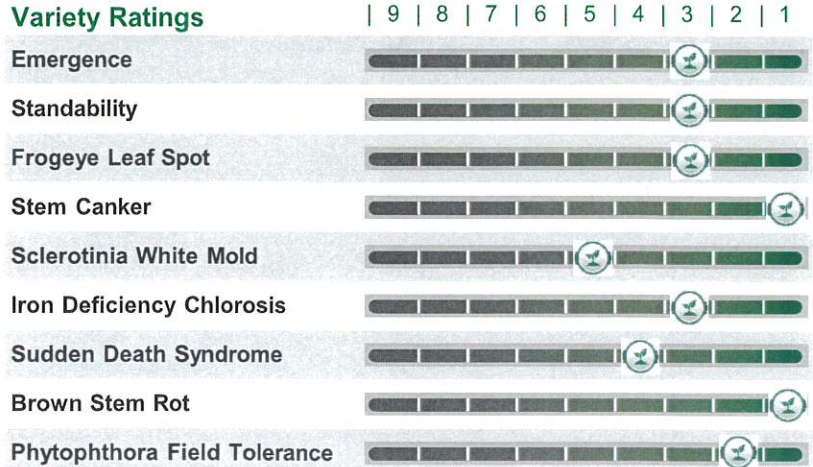


## XO 1632E

### Plant Characteristics

Relative Maturity	1.6
Flower Color	Purple
Pubescence	Gray
Pod Color	Tan
Hilum Color	Buff
Seed Size (seeds per lb.)	3200
Plant Height	Medium
Canopy Type	Med-Bush
Soybean Cyst Nematode	PI88788
Phytophthora Source	3a
Sulfonylurea Tolerance	No

### Variety Ratings



#### Rating Scale

1: Excellent, 9: Poor | NG: No Gene Detected | -: Testing is currently underway.

### Placement Guide

Field Characteristics	E	VG	A	NR
Highly Productive	<input checked="" type="checkbox"/>	<input type="checkbox"/>	<input type="checkbox"/>	<input type="checkbox"/>
Low Productivity	<input type="checkbox"/>	<input checked="" type="checkbox"/>	<input type="checkbox"/>	<input type="checkbox"/>
Poorly Drained	<input checked="" type="checkbox"/>	<input type="checkbox"/>	<input type="checkbox"/>	<input type="checkbox"/>
Drought Prone	<input type="checkbox"/>	<input checked="" type="checkbox"/>	<input type="checkbox"/>	<input type="checkbox"/>
Irrigation	<input checked="" type="checkbox"/>	<input type="checkbox"/>	<input type="checkbox"/>	<input type="checkbox"/>
Variable Soils	<input type="checkbox"/>	<input checked="" type="checkbox"/>	<input type="checkbox"/>	<input type="checkbox"/>
No-Till, Cover Crop	<input type="checkbox"/>	<input checked="" type="checkbox"/>	<input type="checkbox"/>	<input type="checkbox"/>

E: Excellent | VG: Very Good | A: Average | NR: Not Recommended

### Local Agronomic Notes

#### Solid disease package including the Rps3a phytophthora gene

- Good early season emergence and vigor.
- Solid agronomic package including the 3a phytophthora gene combined with excellent field tolerance.
- Excellent top end yield potential for the highly productive acre
- Good standability with moderate height and bushiness.
- Manage SWM with row spacing, lower seeding rate, & Endura fungicide at R1.

Ratings subject to change. Localized positioning for Iowa.

**Product Use Statement:** Enlist E3<sup>®</sup> soybeans contain the Enlist E3 trait that provides crop safety for use of labeled over-the-top applications of glyphosate, glufosinate, and 2,4-D herbicides featuring Colex-D<sup>®</sup> technology when applied according to label directions. Following burndown, the only 2,4-D containing herbicide products that may be used with Enlist<sup>™</sup> crops are products that feature Colex-D technology and are expressly labeled for use on Enlist crops. 2,4-D products that do not contain Colex-D technology are not authorized for use in conjunction with Enlist E3 soybeans.

**Warning:** Enlist E3 soybeans are tolerant of over-the top applications of glyphosate, glufosinate, and 2,4-D. Accidental application of incompatible herbicides to this variety could result in total crop loss. When using 2,4-D herbicides, grower agrees to only use 2,4-D products that contain Colex-D technology authorized for use in conjunction with Enlist E3 soybeans. Always read and follow herbicide label directions prior to use.

YOU MUST SIGN A TECHNOLOGY AGREEMENT, READ THE PRODUCT USE GUIDE PRIOR TO PLANTING AND FOLLOW HERBICIDE RESISTANCE MANAGEMENT (HRM) REQUIREMENTS. The transgenic event in the Enlist E3<sup>®</sup> soybean is protected under Corteva Agriscience and M.S. Technologies, L.L.C. Patent Rights which can be found at: [www.corteva.us/Resources/trait-stewardship.html](http://www.corteva.us/Resources/trait-stewardship.html).

The transgenic event in the Enlist E3<sup>®</sup> soybean event in Enlist E3<sup>®</sup> soybeans is jointly developed and owned by Corteva Agriscience and M.S. Technologies, L.L.C. Enlist, Enlist E3 and the Enlist E3 logo are trademarks of Corteva Agriscience and their affiliated companies.

XTAVO IS A TRADEMARK OF M.S. TECHNOLOGIES, L.L.C., WEST POINT, IA. Please read the MS Technologies, L.L.C. use restriction agreement located at: <http://www.mstechseed.com/use-restriction-agreement/>

© 2022 BASF Corporation. T.W. Alexander Drive, RTP, North Carolina 27709  
All rights reserved.

# Yields in Your Favor

**Xitavo™**  
Soybean Seed  
Distributed by BASF Corporation

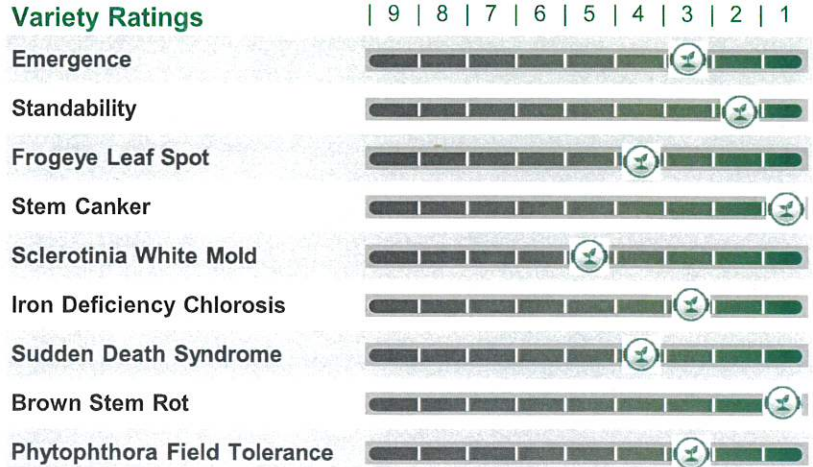


## XO 2282E

### Plant Characteristics

Relative Maturity	2.3
Flower Color	White
Pubescence	Gray
Pod Color	Tan
Hilum Color	Buff
Seed Size (seeds per lb.)	3000
Plant Height	Med/Avg
Canopy Type	Medium
Soybean Cyst Nematode	PI88788
Phytophthora Source	NG
Sulfonylurea Tolerance	No

### Variety Ratings



#### Rating Scale

1: Excellent, 9: Poor | NG: No Gene Detected | -: Testing is currently underway.

### Placement Guide

Field Characteristics	E	VG	A	NR
Highly Productive	<input type="checkbox"/>	<input checked="" type="checkbox"/>	<input type="checkbox"/>	<input type="checkbox"/>
Low Productivity	<input checked="" type="checkbox"/>	<input type="checkbox"/>	<input type="checkbox"/>	<input type="checkbox"/>
Poorly Drained	<input type="checkbox"/>	<input checked="" type="checkbox"/>	<input type="checkbox"/>	<input type="checkbox"/>
Drought Prone	<input checked="" type="checkbox"/>	<input type="checkbox"/>	<input type="checkbox"/>	<input type="checkbox"/>
Irrigation	<input type="checkbox"/>	<input checked="" type="checkbox"/>	<input type="checkbox"/>	<input type="checkbox"/>
Variable Soils	<input checked="" type="checkbox"/>	<input type="checkbox"/>	<input type="checkbox"/>	<input type="checkbox"/>
No-Till, Cover Crop	<input checked="" type="checkbox"/>	<input type="checkbox"/>	<input type="checkbox"/>	<input type="checkbox"/>

E: Excellent | VG: Very Good | A: Average | NR: Not Recommended

### Local Agronomic Notes

#### Consistent across soil types

- Nice early season emergence and vigor across soil types.
- Drought stress tolerance including sandy soils, light clay soils, and rolling hills.
- Tends to mature later than a 2.2 RM acting truer to a 2.3 RM.
- Attractive looking performer across all acres; very consistent.
- Good standability with better than average sudden death syndrome and phytophthora tolerance and above average IDC tolerance.
- Manage SWM with row spacing, lower seeding rate, & Endura fungicide at R1.

**Product Use Statement:** Enlist E3® soybeans contain the Enlist E3 trait that provides crop safety for use of labeled over-the-top applications of glyphosate, glufosinate, and 2,4-D herbicides featuring Colex-D® technology when applied according to label directions. Following burndown, the only 2,4-D containing herbicide products that may be used with Enlist™ crops are products that feature Colex-D technology and are expressly labeled for use on Enlist crops. 2,4-D products that do not contain Colex-D technology are not authorized for use in conjunction with Enlist E3 soybeans.

**Warning:** Enlist E3 soybeans are tolerant of over-the top applications of glyphosate, glufosinate, and 2,4-D. Accidental application of incompatible herbicides to this variety could result in total crop loss. When using 2,4-D herbicides, grower agrees to only use 2,4-D products that contain Colex-D technology authorized for use in conjunction with Enlist E3 soybeans. Always read and follow herbicide label directions prior to use.

YOU MUST SIGN A TECHNOLOGY AGREEMENT, READ THE PRODUCT USE GUIDE PRIOR TO PLANTING AND FOLLOW HERBICIDE RESISTANCE MANAGEMENT (HRM) REQUIREMENTS. The transgenic event in the Enlist E3® soybean is protected under Corteva Agriscience and M.S. Technologies, L.L.C. Patent Rights which can be found at: [www.corteva.us/Resources/trait-stewardship.html](http://www.corteva.us/Resources/trait-stewardship.html).

The transgenic event in the Enlist E3® soybean event in Enlist E3® soybeans is jointly developed and owned by Corteva Agriscience and M.S. Technologies, L.L.C. Enlist, Enlist E3 and the Enlist E3 logo are trademarks of Corteva Agriscience and their affiliated companies.

XITAVO IS A TRADEMARK OF M.S. TECHNOLOGIES, L.L.C., WEST POINT, IA. Please read the MS Technologies, L.L.C. use restriction agreement located at: <http://www.mstechseed.com/use-restriction-agreement/>

© 2022 BASF Corporation. T.W. Alexander Drive, RTP, North Carolina 27709  
All rights reserved.

# Yields in Your Favor

**Xitavo™**  
Soybean Seed

Distributed by BASF Corporation

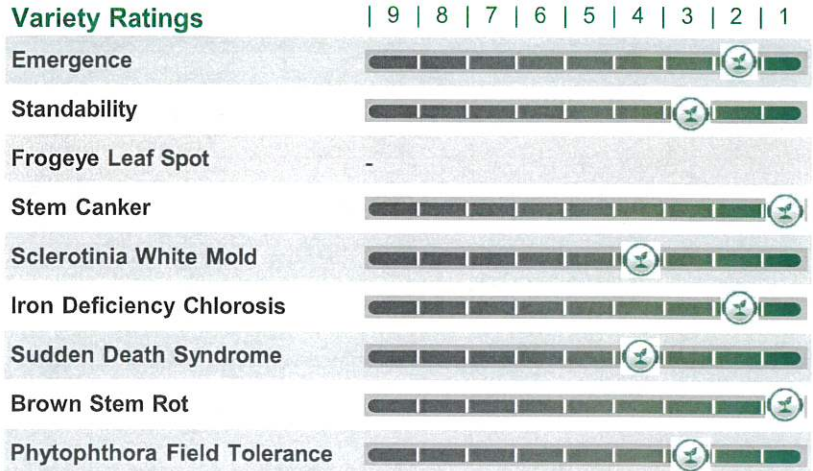


## XO 2323E **NEW**

### Plant Characteristics

Relative Maturity	2.3
Flower Color	Purple
Pubescence	Lt. Tawny
Pod Color	Tan
Hilum Color	Black
Seed Size (seeds per lb.)	2800
Plant Height	Med/Tall
Canopy Type	Med-Bush
Soybean Cyst Nematode	PI88788
Phytophthora Source	1c
Sulfonylurea Tolerance	No

### Variety Ratings



#### Rating Scale

1: Excellent, 9: Poor | NG: No Gene Detected | -: Testing is currently underway.

### Placement Guide

Field Characteristics	E	VG	A	NR
Highly Productive				
Low Productivity				
Poorly Drained				
Drought Prone				
Irrigation				
Variable Soils				
No-Till, Cover Crop				

E: Excellent | VG: Very Good | A: Average | NR: Not Recommended

### Local Agronomic Notes

#### Strong yields with great agronomics

- New variety for 2023! More placement information will be available Fall 2022.
- Very strong and consistent early season emergence and vigor across soil types from sand to clay.
- Preliminary results indicate good tolerance to wet natured soils, phytophthora root rot, well above average IDC tolerance.
- Attractive appearance in a medium-tall, medium-bushy variety type with excellent branching at all seeding rates.

Ratings subject to change. Localized positioning for Iowa.

**Product Use Statement:** Enlist E3® soybeans contain the Enlist E3 trait that provides crop safety for use of labeled over-the-top applications of glyphosate, glufosinate, and 2,4-D herbicides featuring Colex-D® technology when applied according to label directions. Following burndown, the only 2,4-D containing herbicide products that may be used with Enlist™ crops are products that feature Colex-D technology and are expressly labeled for use on Enlist crops. 2,4-D products that do not contain Colex-D technology are not authorized for use in conjunction with Enlist E3 soybeans.

**Warning:** Enlist E3 soybeans are tolerant of over-the top applications of glyphosate, glufosinate, and 2,4-D. Accidental application of incompatible herbicides to this variety could result in total crop loss. When using 2,4-D herbicides, grower agrees to only use 2,4-D products that contain Colex-D technology authorized for use in conjunction with Enlist E3 soybeans. Always read and follow herbicide label directions prior to use.

YOU MUST SIGN A TECHNOLOGY AGREEMENT, READ THE PRODUCT USE GUIDE PRIOR TO PLANTING AND FOLLOW HERBICIDE RESISTANCE MANAGEMENT (HRM) REQUIREMENTS. The transgenic event in the Enlist E3® soybean is protected under Corteva Agriscience and M.S. Technologies, L.L.C. Patent Rights which can be found at: [www.corteva.us/Resources/trait-stewardship.html](http://www.corteva.us/Resources/trait-stewardship.html).

The transgenic event in the Enlist E3® soybean event in Enlist E3® soybeans is jointly developed and owned by Corteva Agriscience and M.S. Technologies, L.L.C. Enlist, Enlist E3 and the Enlist E3 logo are trademarks of Corteva Agriscience and their affiliated companies.

XITAVO IS A TRADEMARK OF M.S. TECHNOLOGIES, L.L.C., WEST POINT, IA. Please read the MS Technologies, L.L.C. use restriction agreement located at: <http://www.mstechseed.com/use-restriction-agreement/>

© 2022 BASF Corporation. T.W. Alexander Drive, RTP, North Carolina 27709  
All rights reserved.

# Yields in Your Favor

**Xitavo**<sup>TM</sup>  
Soybean Seed  
Distributed by BASF Corporation

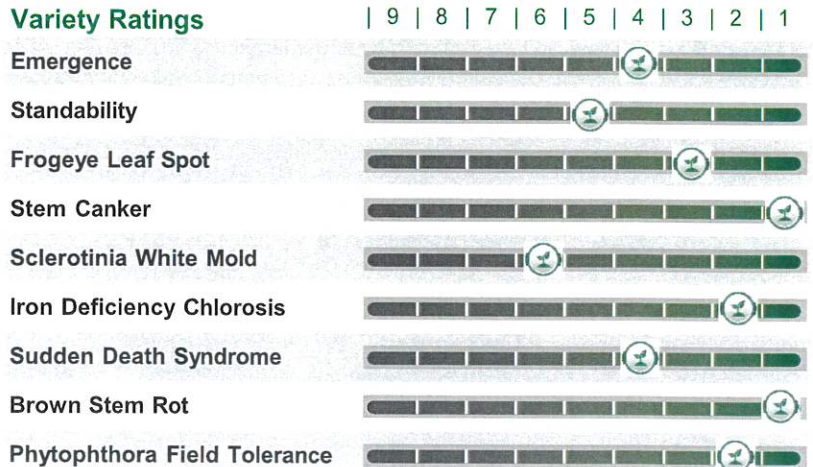


## XO 2501E

### Plant Characteristics

Relative Maturity	2.5
Flower Color	Purple
Pubescence	Gray
Pod Color	Brown
Hilum Color	Imp Black
Seed Size (seeds per lb.)	2600
Plant Height	Med/Tall
Canopy Type	Bushy
Soybean Cyst Nematode	PI88788
Phytophthora Source	NG
Sulfonyleurea Tolerance	No

### Variety Ratings



#### Rating Scale

1: Excellent, 9: Poor | NG: No Gene Detected | -: Testing is currently underway.

### Placement Guide

Field Characteristics	E	VG	A	NR
Highly Productive	<input checked="" type="checkbox"/>	<input type="checkbox"/>	<input type="checkbox"/>	<input type="checkbox"/>
Low Productivity	<input type="checkbox"/>	<input checked="" type="checkbox"/>	<input type="checkbox"/>	<input type="checkbox"/>
Poorly Drained	<input checked="" type="checkbox"/>	<input type="checkbox"/>	<input type="checkbox"/>	<input type="checkbox"/>
Drought Prone	<input type="checkbox"/>	<input type="checkbox"/>	<input checked="" type="checkbox"/>	<input type="checkbox"/>
Irrigation	<input type="checkbox"/>	<input checked="" type="checkbox"/>	<input type="checkbox"/>	<input type="checkbox"/>
Variable Soils	<input type="checkbox"/>	<input checked="" type="checkbox"/>	<input type="checkbox"/>	<input type="checkbox"/>
No-Till, Cover Crop	<input type="checkbox"/>	<input checked="" type="checkbox"/>	<input type="checkbox"/>	<input type="checkbox"/>

E: Excellent | VG: Very Good | A: Average | NR: Not Recommended

### Local Agronomic Notes

#### Excellent yield potential with tolerance to wet natured soil

- Strong top end yield potential on the highly productive acre.
- Excellent stress tolerance to tackle the poorly drained acre.
- No phytophthora gene, but excellent field tolerance to the disease.
- Bushier variety type with lateral branching that closes the plant canopy quickly and adopts to all seeding rates.
- Recommended to lower seeding rates on highly productive acres.
- Manage SWM with wider row spacing, lower seeding rate, & Endura fungicide at R1.

Ratings subject to change. Localized positioning for Iowa.

**Product Use Statement:** Enlist E3<sup>®</sup> soybeans contain the Enlist E3 trait that provides crop safety for use of labeled over-the-top applications of glyphosate, glufosinate, and 2,4-D herbicides featuring Colex-D<sup>®</sup> technology when applied according to label directions. Following burndown, the only 2,4-D containing herbicide products that may be used with Enlist<sup>™</sup> crops are products that feature Colex-D technology and are expressly labeled for use on enlist crops. 2,4-D products that do not contain Colex-D technology are not authorized for use in conjunction with Enlist E3 soybeans.

**Warning:** Enlist E3 soybeans are tolerant of over-the top applications of glyphosate, glufosinate, and 2,4-D. Accidental application of incompatible herbicides to this variety could result in total crop loss. When using 2,4-D herbicides, grower agrees to only use 2,4-D products that contain Colex-D technology authorized for use in conjunction with Enlist E3 soybeans. Always read and follow herbicide label directions prior to use.

YOU MUST SIGN A TECHNOLOGY AGREEMENT, READ THE PRODUCT USE GUIDE PRIOR TO PLANTING AND FOLLOW HERBICIDE RESISTANCE MANAGEMENT (HRM) REQUIREMENTS. The transgenic event in the Enlist E3<sup>®</sup> soybean is protected under Corteva Agriscience and M.S. Technologies, L.L.C. Patent Rights which can be found at: [www.corteva.us/Resources/trait-stewardship.html](http://www.corteva.us/Resources/trait-stewardship.html).

The transgenic event in the Enlist E3<sup>®</sup> soybean event in Enlist E3<sup>®</sup> soybeans is jointly developed and owned by Corteva Agriscience and M.S. Technologies, L.L.C. Enlist, Enlist E3 and the Enlist E3 logo are trademarks of Corteva Agriscience and their affiliated companies.

XITAVO IS A TRADEMARK OF M.S. TECHNOLOGIES, L.L.C., WEST POINT, IA. Please read the MS Technologies, L.L.C. use restriction agreement located at: <http://www.mstechseed.com/use-restriction-agreement/>

© 2022 BASF Corporation. T.W. Alexander Drive, RTP, North Carolina 27709  
All rights reserved.

# Yields in Your Favor

**Xitavo™**  
Soybean Seed

Distributed by BASF Corporation

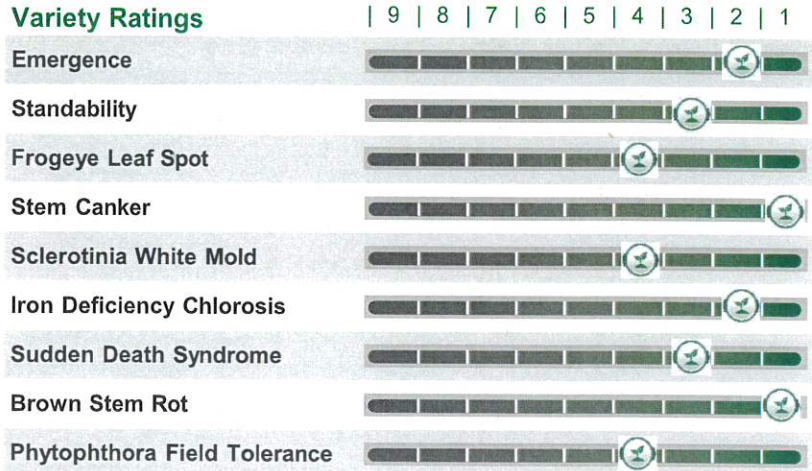


## XO 2613E **NEW**

### Plant Characteristics

Relative Maturity	2.6
Flower Color	Purple
Pubescence	Gray
Pod Color	Tan
Hilum Color	Buff
Seed Size (seeds per lb.)	2700
Plant Height	Med/Tall
Canopy Type	Med-Bush
Soybean Cyst Nematode	PI88788
Phytophthora Source	1c
Sulfonylurea Tolerance	No

### Variety Ratings



#### Rating Scale

1: Excellent, 9: Poor | NG: No Gene Detected | -: Testing is currently underway.

### Placement Guide

Field Characteristics	E	VG	A	NR
Highly Productive				
Low Productivity				
Poorly Drained				
Drought Prone				
Irrigation				
Variable Soils				
No-Till, Cover Crop				

E: Excellent | VG: Very Good | A: Average | NR: Not Recommended

### Local Agronomic Notes

#### Excellent yield potential with stress tolerance

- New variety for 2023! More placement information will be available Fall 2022.
- Very consistent early season emergence and vigor across soil types and management styles.
- Impressive lateral branching and medium bushy plant type at all seeding rates.
- Good defensive disease package with above average tolerance to IDC.

Ratings subject to change. Localized positioning for Iowa.

**Product Use Statement:** Enlist E3® soybeans contain the Enlist E3 trait that provides crop safety for use of labeled over-the-top applications of glyphosate, glufosinate, and 2,4-D herbicides featuring Colex-D® technology when applied according to label directions. Following burndown, the only 2,4-D containing herbicide products that may be used with Enlist™ crops are products that feature Colex-D technology and are expressly labeled for use on Enlist crops. 2,4-D products that do not contain Colex-D technology are not authorized for use in conjunction with Enlist E3 soybeans.

**Warning:** Enlist E3 soybeans are tolerant of over-the top applications of glyphosate, glufosinate, and 2,4-D. Accidental application of incompatible herbicides to this variety could result in total crop loss. When using 2,4-D herbicides, grower agrees to only use 2,4-D products that contain Colex-D technology authorized for use in conjunction with Enlist E3 soybeans. Always read and follow herbicide label directions prior to use.

YOU MUST SIGN A TECHNOLOGY AGREEMENT, READ THE PRODUCT USE GUIDE PRIOR TO PLANTING AND FOLLOW HERBICIDE RESISTANCE MANAGEMENT (HRM) REQUIREMENTS. The transgenic event in the Enlist E3® soybean is protected under Corteva Agriscience and M.S. Technologies, L.L.C. Patent Rights which can be found at: [www.corteva.us/Resources/trait-stewardship.html](http://www.corteva.us/Resources/trait-stewardship.html).

The transgenic event in the Enlist E3® soybean event in Enlist E3® soybeans is jointly developed and owned by Corteva Agriscience and M.S. Technologies, L.L.C. Enlist, Enlist E3 and the Enlist E3 logo are trademarks of Corteva Agriscience and their affiliated companies.

XITAVO IS A TRADEMARK OF M.S. TECHNOLOGIES, L.L.C., WEST POINT, IA. Please read the MS Technologies, L.L.C. use restriction agreement located at: <http://www.mstechseed.com/use-restriction-agreement/>

© 2022 BASF Corporation. T.W. Alexander Drive, RTP, North Carolina 27709  
All rights reserved.

# Yields in Your Favor

**Xitavo™**  
Soybean Seed  
Distributed by BASF Corporation

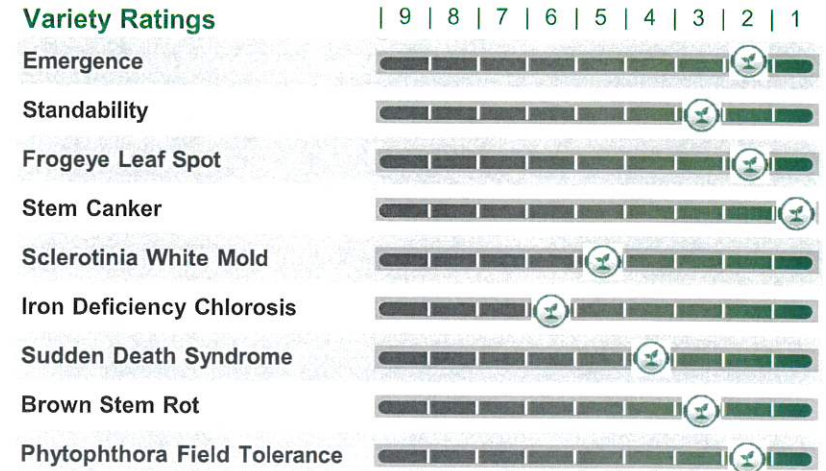


## XO 3131E

### Plant Characteristics

Relative Maturity	3.1
Flower Color	White
Pubescence	Gray
Pod Color	Brown
Hilum Color	Buff
Seed Size (seeds per lb.)	2800
Plant Height	Med/Tall
Canopy Type	Med-Bush
Soybean Cyst Nematode	PI88788
Phytophthora Source	1c
Sulfonylurea Tolerance	No

### Variety Ratings



#### Rating Scale

1: Excellent, 9: Poor | NG: No Gene Detected | -: Testing is currently underway.

### Placement Guide

Field Characteristics	E	VG	A	NR
Highly Productive	<input checked="" type="checkbox"/>	<input type="checkbox"/>	<input type="checkbox"/>	<input type="checkbox"/>
Low Productivity	<input checked="" type="checkbox"/>	<input type="checkbox"/>	<input type="checkbox"/>	<input type="checkbox"/>
Poorly Drained	<input checked="" type="checkbox"/>	<input type="checkbox"/>	<input type="checkbox"/>	<input type="checkbox"/>
Drought Prone	<input type="checkbox"/>	<input checked="" type="checkbox"/>	<input type="checkbox"/>	<input type="checkbox"/>
Irrigation	<input type="checkbox"/>	<input checked="" type="checkbox"/>	<input type="checkbox"/>	<input type="checkbox"/>
Variable Soils	<input checked="" type="checkbox"/>	<input type="checkbox"/>	<input type="checkbox"/>	<input type="checkbox"/>
No-Till, Cover Crop	<input checked="" type="checkbox"/>	<input type="checkbox"/>	<input type="checkbox"/>	<input type="checkbox"/>

E: Excellent | VG: Very Good | A: Average | NR: Not Recommended

### Local Agronomic Notes

#### True go-almost-anywhere genetics in a proven top selling variety

- Great go-to early maturity Group 3 variety with a true strength in versatility, yield, and consistency across broad acres.
- Excellent stress tolerance to wet natured soils.
- Strong early season emergence and vigor, including heavy residue.
- Solid disease package includes excellent tolerance to phytophthora root rot and frogeye leaf spot.
- Versatile management across row spacing and seeding rates.
- Poor choice for high pH / IDC prone soils.

Ratings subject to change. Localized positioning for Iowa.

**Product Use Statement:** Enlist E3® soybeans contain the Enlist E3 trait that provides crop safety for use of labeled over-the-top applications of glyphosate, glufosinate, and 2,4-D herbicides featuring Colex-D® technology when applied according to label directions. Following burndown, the only 2,4-D containing herbicide products that may be used with Enlist™ crops are products that feature Colex-D technology and are expressly labeled for use on enlist crops. 2,4-D products that do not contain Colex-D technology are not authorized for use in conjunction with Enlist E3 soybeans.

**Warning:** Enlist E3 soybeans are tolerant of over-the top applications of glyphosate, glufosinate, and 2,4-D. Accidental application of incompatible herbicides to this variety could result in total crop loss. When using 2,4-D herbicides, grower agrees to only use 2,4-D products that contain Colex-D technology authorized for use in conjunction with Enlist E3 soybeans. Always read and follow herbicide label directions prior to use.

YOU MUST SIGN A TECHNOLOGY AGREEMENT, READ THE PRODUCT USE GUIDE PRIOR TO PLANTING AND FOLLOW HERBICIDE RESISTANCE MANAGEMENT (HRM) REQUIREMENTS. The transgenic event in the Enlist E3® soybean is protected under Corteva Agriscience and M.S. Technologies, L.L.C. Patent Rights which can be found at: [www.corteva.us/Resources/trait-stewardship.html](http://www.corteva.us/Resources/trait-stewardship.html).

The transgenic event in the Enlist E3® soybean event in Enlist E3® soybeans is jointly developed and owned by Corteva Agriscience and M.S. Technologies, L.L.C. Enlist, Enlist E3 and the Enlist E3 logo are trademarks of Corteva Agriscience and their affiliated companies.

XITAVO IS A TRADEMARK OF M.S. TECHNOLOGIES, L.L.C., WEST POINT, IA. Please read the MS Technologies, L.L.C. use restriction agreement located at: <http://www.mstechseed.com/use-restriction-agreement/>

© 2022 BASF Corporation. T.W. Alexander Drive, RTP, North Carolina 27709  
All rights reserved.

# Yields in Your Favor

# Xitavo™

Soybean Seed

Distributed by BASF Corporation

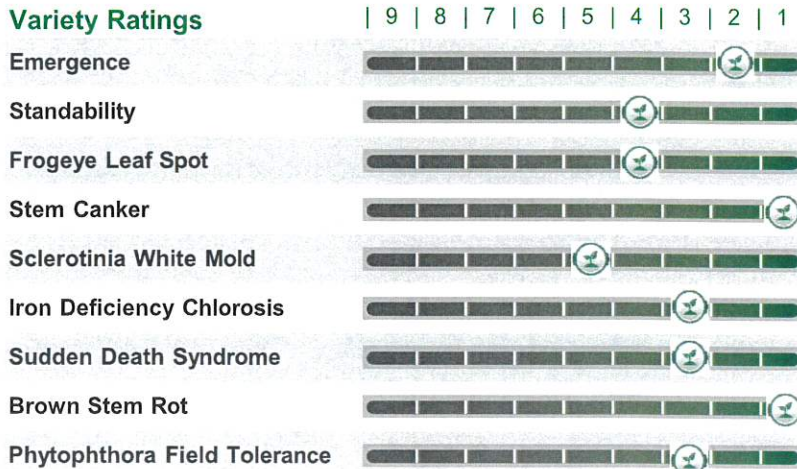


## XO 3402E

### Plant Characteristics

Relative Maturity	3.4
Flower Color	Purple
Pubescence	Lt. Tawny
Pod Color	Brown
Hilum Color	Black
Seed Size (seeds per lb.)	3250
Plant Height	Tall
Canopy Type	Med-Bush
Soybean Cyst Nematode	PI88788
Phytophthora Source	NG
Sulfonylurea Tolerance	No

### Variety Ratings



#### Rating Scale

1: Excellent, 9: Poor | NG: No Gene Detected | -: Testing is currently underway.

### Placement Guide

Field Characteristics	E	VG	A	NR
Highly Productive	<input type="checkbox"/>	<input checked="" type="checkbox"/>	<input type="checkbox"/>	<input type="checkbox"/>
Low Productivity	<input checked="" type="checkbox"/>	<input type="checkbox"/>	<input type="checkbox"/>	<input type="checkbox"/>
Poorly Drained	<input checked="" type="checkbox"/>	<input type="checkbox"/>	<input type="checkbox"/>	<input type="checkbox"/>
Drought Prone	<input checked="" type="checkbox"/>	<input type="checkbox"/>	<input type="checkbox"/>	<input type="checkbox"/>
Irrigation	<input type="checkbox"/>	<input checked="" type="checkbox"/>	<input type="checkbox"/>	<input type="checkbox"/>
Variable Soils	<input checked="" type="checkbox"/>	<input type="checkbox"/>	<input type="checkbox"/>	<input type="checkbox"/>
No-Till, Cover Crop	<input checked="" type="checkbox"/>	<input type="checkbox"/>	<input type="checkbox"/>	<input type="checkbox"/>

E: Excellent | VG: Very Good | A: Average | NR: Not Recommended

### Local Agronomic Notes

#### Rugged plant type with stress tolerance

- High yield potential on all acres, but truly separates itself on the medium to lower productivity and stress prone acre.
- Taller plant type that maintains height under stress and tough conditions.
- Lt. Tawny, unique appearance with Strong emergence and vigor.
- Vigorous growth habit makes it an excellent option for tight clay soils.
- Recommended for lower seeding rates. Avoid placement on fields with a history of lodging.

Ratings subject to change. Localized positioning for Iowa.

**Product Use Statement:** Enlist E3® soybeans contain the Enlist E3 trait that provides crop safety for use of labeled over-the-top applications of glyphosate, glufosinate, and 2,4-D herbicides featuring Colex-D® technology when applied according to label directions. Following burndown, the only 2,4-D containing herbicide products that may be used with Enlist™ crops are products that feature Colex-D technology and are expressly labeled for use on Enlist crops. 2,4-D products that do not contain Colex-D technology are not authorized for use in conjunction with Enlist E3 soybeans.

**Warning:** Enlist E3 soybeans are tolerant of over-the-top applications of glyphosate, glufosinate, and 2,4-D. Accidental application of incompatible herbicides to this variety could result in total crop loss. When using 2,4-D herbicides, grower agrees to only use 2,4-D products that contain Colex-D technology authorized for use in conjunction with Enlist E3 soybeans. Always read and follow herbicide label directions prior to use.

YOU MUST SIGN A TECHNOLOGY AGREEMENT, READ THE PRODUCT USE GUIDE PRIOR TO PLANTING AND FOLLOW HERBICIDE RESISTANCE MANAGEMENT (HRM) REQUIREMENTS. The transgenic event in the Enlist E3® soybean is protected under Corteva Agriscience and M.S. Technologies, L.L.C. Patent Rights which can be found at: [www.corteva.us/Resources/trait-stewardship.html](http://www.corteva.us/Resources/trait-stewardship.html).

The transgenic event in the Enlist E3® soybean event in Enlist E3® soybeans is jointly developed and owned by Corteva Agriscience and M.S. Technologies, L.L.C. Enlist, Enlist E3 and the Enlist E3 logo are trademarks of Corteva Agriscience and their affiliated companies.

XITAVO IS A TRADEMARK OF M.S. TECHNOLOGIES, L.L.C., WEST POINT, IA. Please read the MS Technologies, L.L.C. use restriction agreement located at: <http://www.mstechseed.com/use-restriction-agreement/>

© 2022 BASF Corporation. T.W. Alexander Drive, RTP, North Carolina 27709  
All rights reserved.