

Kylem Plus

SYSTEMIC FUNGICIDE



PROTECT THE STALK

- ✓ *60-Day Residual in the Plant*
- ✓ *In-Furrow or Foliar Application*
- ✓ *Systemic Action in the Plant & Stalk*

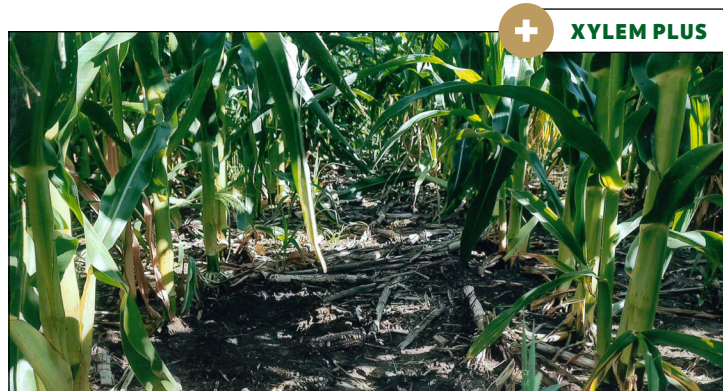
BETTER YIELDS. *Superior Standability.*

Xylem Plus

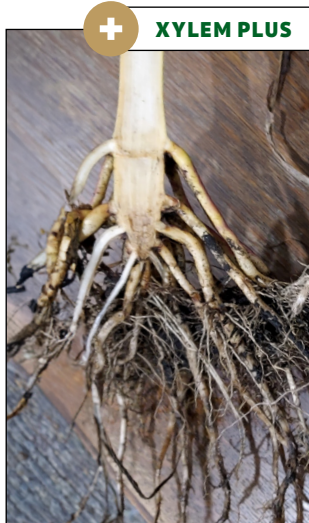
Systemic Fungicide

IN THE FIELD

CORN FIELD TRIAL Xylem Plus was applied in-furrow at 32 oz/acre. Images were taken 12 rows apart.



CORN COMPARISONS: STALKS & KERNELS



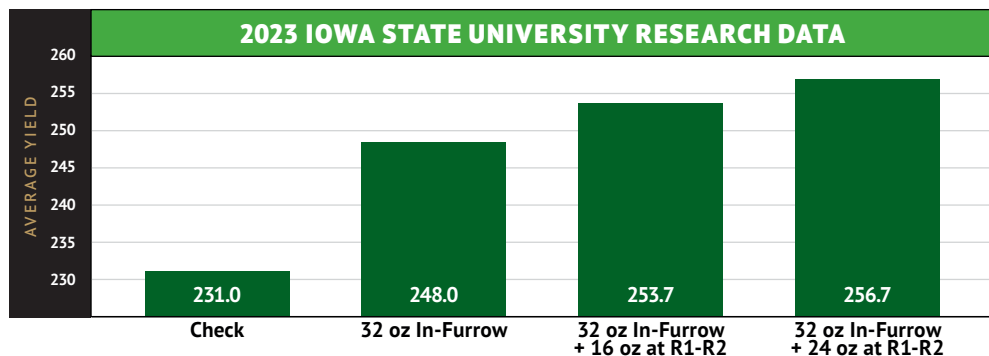
SOYBEAN FIELD TRIAL

- Same seed variety
- Fields across the road from one another
- Farmed by the same grower



PUTTING IT TO THE TEST

Xylem Plus was put to the test on our research plots at Iowa State University in 2023. Every application time and rate that was tested saw increased yield and increased net return.



Xylem Plus

Systemic Fungicide

DISEASE CONTROL

XYLEM PLUS is a **SYSTEMIC FUNGICIDE** with up to a **60-DAY RESIDUAL** in the stalk and leaves that provides **RESISTANCE AGAINST COMMON DISEASES**.

CORN DISEASE DEFENSE

IN-FURROW OR EARLY FOLIAR	EARLY OR LATE FOLIAR
ROOT+SEED	STALK
<ul style="list-style-type: none"> ✓ Pythium Damping Off Nematodes ✓ Fusarium Seed Blight ✓ Rhizoctonia Root Rot ✓ Other Rots or Seedling Blight 	<ul style="list-style-type: none"> ✓ Fusarium Stalk Rot Charcoal Rot ✓ Anthracnose Stalk Rot ✓ Gibberella Stalk Rot ✓ Bacterial Stalk Rot ✓ Pythium Stalk Rot
LEAF	ABOVE GROUND
<ul style="list-style-type: none"> Gray Leaf Spot Northern Leaf Blight ✓ Goss's Wilt Southern Rust ✓ Common Rust Eyespot Northern Corn Leaf Spot ✓ Stewart's Disease Holcus Spot ✓ Anthracnose Leaf Blight Viruses Physoderma Leaf Spot Southern Corn Leaf Blight 	<ul style="list-style-type: none"> Common Smut Head Smut Crazy Top ✓ Downy Mildew
	EAR
	<ul style="list-style-type: none"> ✓ Aspergillus Ear Rot ✓ Fusarium Ear Rot ✓ Gibberella Ear Rot Other Ear Rots

SOYBEAN DISEASE DEFENSE

IN-FURROW OR EARLY FOLIAR	EARLY + LATE FOLIAR
ROOT+SEED	STEM
<ul style="list-style-type: none"> Soybean Cyst Nematode Root Knot Nematode ✓ Fusarium ✓ Pythium ✓ Phomopsis ✓ Rhizoctonia Reniform Nematode ✓ Taproot Decline 	<ul style="list-style-type: none"> ✓ Sudden Death Syndrome ✓ WHITE MOLD ✓ Phytophthora Root & Stem Rot Charcoal Rot ✓ Pod & Stem Blight Diaporthe Seed Decay ✓ Brown Stem Rot ✓ Stem Canker ✓ Anthracnose Southern Blight ✓ Red Crown Rot
LEAF	
<ul style="list-style-type: none"> Cercospora Leaf Blight Frogeye Leaf Spot Septoria Brown Spot Purple Seed Stain ✓ Rhizoctonia Aerial Blight Tar Spot ✓ Bacterial Diseases ✓ Viruses Soybean Rust ✓ Downy Mildew 	



Xylem Plus protects against the diseases that are highlighted in green.

WHITE MOLD CONTROL

Xylem Plus has proven to be effective in controlling White Mold. For optimal White Mold control, you **must** follow these application guidelines:

- Spray 24 oz/acre at **R1 (early flower)** with your last post-emergence spray, followed by 24 oz/acre **2 weeks later**.
- This timing is **CRUCIAL** for White Mold control. Any longer than 2 weeks between sprayings will reduce the effectiveness of Xylem Plus in controlling White Mold.



HOW IT WORKS



FOLIAR APPLICATION

Xylem Plus is absorbed through the leaves and transported around the plant down to the root tissues. Once in the root tissues, Xylem Plus will help the plant continuously produce healthy roots and stalks to increase plant performance, while protecting against common diseases.



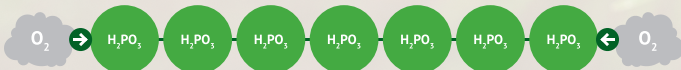
IN-FURROW APPLICATION

Protect your plants at the point of germination with an in-furrow application of Xylem Plus. Xylem Plus is safe for the seeding environment and provides long-lasting protection from soil, root, fungal and bacterial diseases.

PLANT ACTIVITY

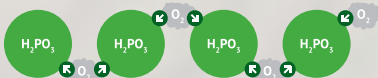
XYLEM PLUS PATENTED PHOSPHITE

Xylem Plus molecules are linked to provide longer lasting disease control throughout the entire plant. Phosphites in Xylem Plus are **active within the plant for an industry-leading 60 days**.



OTHER PHOSPHITES

Other phosphites are unlinked and singular, putting them at risk of oxidation when in contact with air, water or soil. These phosphites are **active within the plant for 30 days or less**.



HOW TO USE

MIXING INSTRUCTIONS

Available in 2.5 gallon jugs and 275 gallon totes.

- Fill spray tank with 1/2 the required volume of water.
 - Plane: 2 gallons of water at a minimum.
 - Ground rig: 10 gallons of water at a minimum.
- Add Xylem Plus slowly to the tank and agitate by hydraulic or mechanical means.
- Continue to fill the tank with water to the desired volume while agitating.
- Continue agitating while applying.

***DO NOT let product freeze. Jar test products prior to mixing.**

RECOMMENDED APPLICATION RATES

Achieve full-season protection with only two applications of Xylem Plus!

	OPTION A	OPTION B
CORN	32 oz/acre Xylem Plus In-Furrow	32 oz/acre Xylem Plus Post Herbicide
	+ 24 oz/acre Xylem Plus VT-R2	+ 24 oz/acre Xylem Plus R2 (Brown Silk)

	OPTION A	OPTION B*
SOYBEANS	32 oz/acre Xylem Plus In-Furrow	24 oz/acre Xylem Plus R1 (Early Flower)
	+ 24 oz/acre Xylem Plus R1 (Early Flower)	+ 24 oz/acre Xylem Plus 2 Weeks Later

*Soybean Option B timing is **CRITICAL** for White Mold control. First application at R1 (early flower) and second application 2 weeks later is **IMPERATIVE** for White Mold control.

